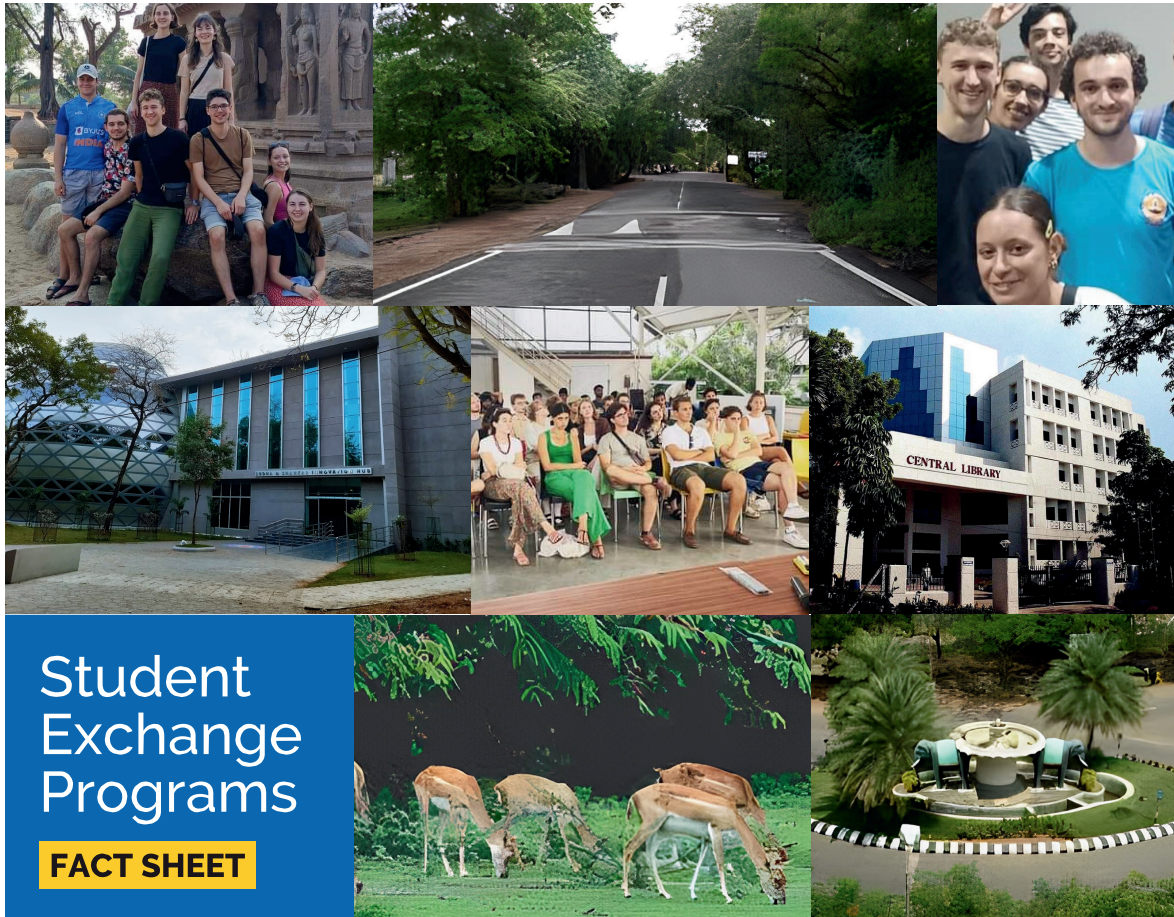
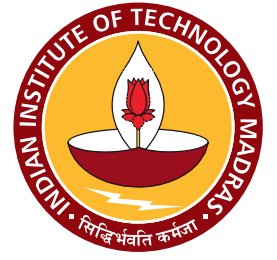


IIT Madras



Student Exchange Programs

FACT SHEET

Contact information

Office of Global Engagement

2nd Floor, Sudha & Shankar Innovation Hub
NAC Road, Indian Institute of Technology
Chennai, Tamil Nadu, 600036

<https://goo.gl/maps/JzPx2zHDmSMLrpXr9>

inbound2@ge.iitm.ac.in
www.iitm.ac.in
www.ge.iitm.ac.in



620
Acres Campus

17
Departments

52
Centres
of Excellence

677
Faculty

50K+
Eminent alumni

Academic information

DURATION	SEMESTER 1	SEMESTER 2
Term	3rd week of July to 1st week of December	2nd week of January to 2nd week of May
Classes	End of July/Beginning of August to Last week of November	Mid of January to Mid of May
Term	3rd week of July	2nd week of January
Classes	3rd & 4th week of November	1st & 2nd week of May

Faculty offering exchange opportunities

DEPARTMENTS	BACHELOR / DD	MASTER DEGREE	RESEARCH
Aerospace Engineering	✓	✓	✓
Applied Mechanics	✓	✓	✓
Biotechnology	✓	✓	✓
Chemical Engineering	✓	✓	✓
Chemistry	x	✓	✓
Civil Engineering	✓	✓	✓
Computer Science and Engineering	✓	✓	✓
Electrical Engineering	✓	✓	✓
Engineering Design	✓	✓	✓
Humanities and Social Sciences	x	✓	✓
Management Studies	x	✓	✓
Mathematics	x	✓	✓
Mechanical Engineering	✓	✓	✓
Metallurgical and Materials Engineering	✓	✓	✓
Ocean Engineering	✓	✓	✓
Physics	✓	✓	✓
Medical Sciences & Technology	✓	x	x

Credit system

1 Credit = 50 minutes (1 Credit hour) per week

1 Credit hour lecture needs 2 Credit hours outside the classroom (for homework and tutorial etc.)

So 3 Lectures a week = 3 + (3x2) = 9 Credit course

2.5 hours of Lab work = 3 Credit hours

In any given semester, a student should not be required to register more than 66 credit hours. This means a maximum time commitment of about 55 clock hours every week.

Language of instruction: English

Language courses offered:

German, French, Korean, Chinese, Japanese courses offered as part of Humanities department courses.

Attendance code & Grade point system

ATTENDANCE ROUNDED TO	REMARKS	CODE
>95%	Very Good	VG
85 - 94%	Good	G
<85%	Poor	P

Grade	S	A	B	C	D	E	U
Points	10	9	8	7	6	4	0

CODE	DESCRIPTION
P	Pass
F	Fail
W	Failure due to insufficient attendance
I	Incomplete (Subsequently to be changed into pass (E to S) or U grade in the semester)
X	Completed NSO/NCC/NSS requirements
Y	Incomplete (in NSO/NCC/NSS)
S-E	Success completion of the course

Important information

LAST DATE FOR APPLICATION

Semester 1: April 15

Semester 2: October 15

REQUIRED DOCUMENTS

- ▶ Application form
- ▶ Transcripts
- ▶ Nomination letter from International Office
- ▶ Curriculum Vitae
- ▶ Passport copy

General information

Estimated cost of living:
₹15,000 per month

Health insurance:
₹850 per sem. / ₹1,602 per year